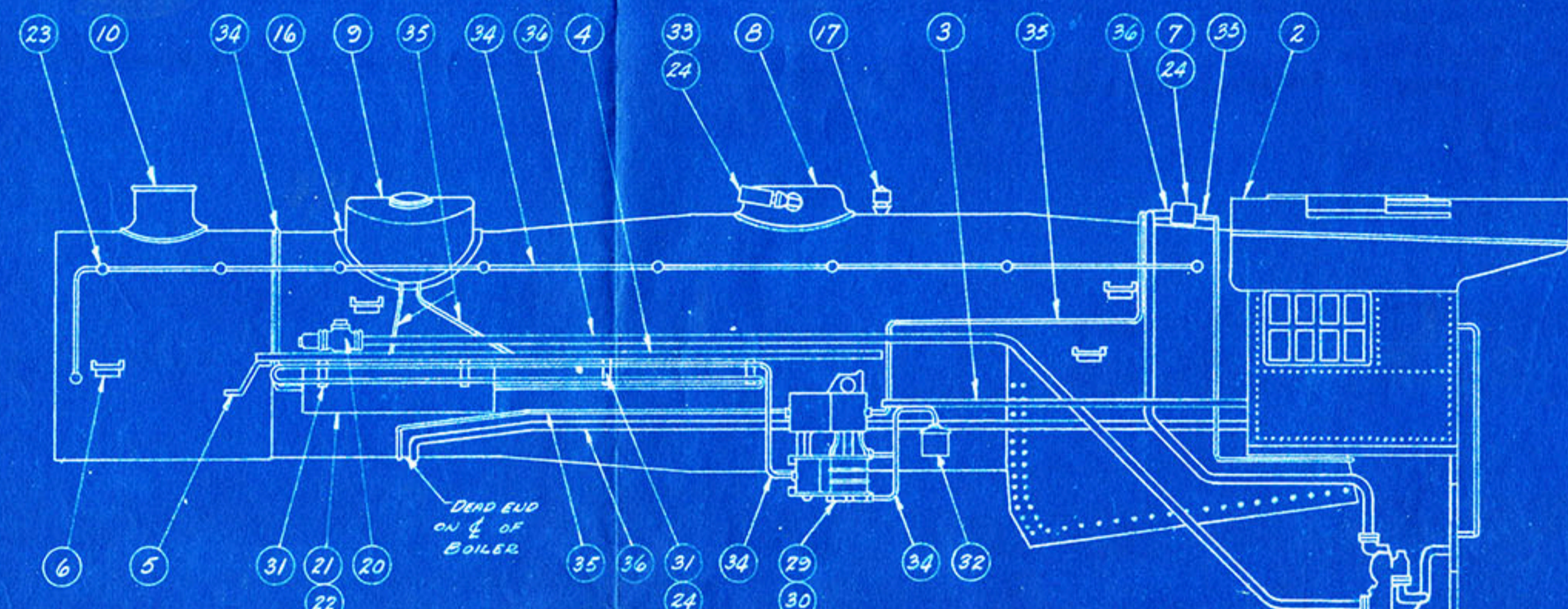
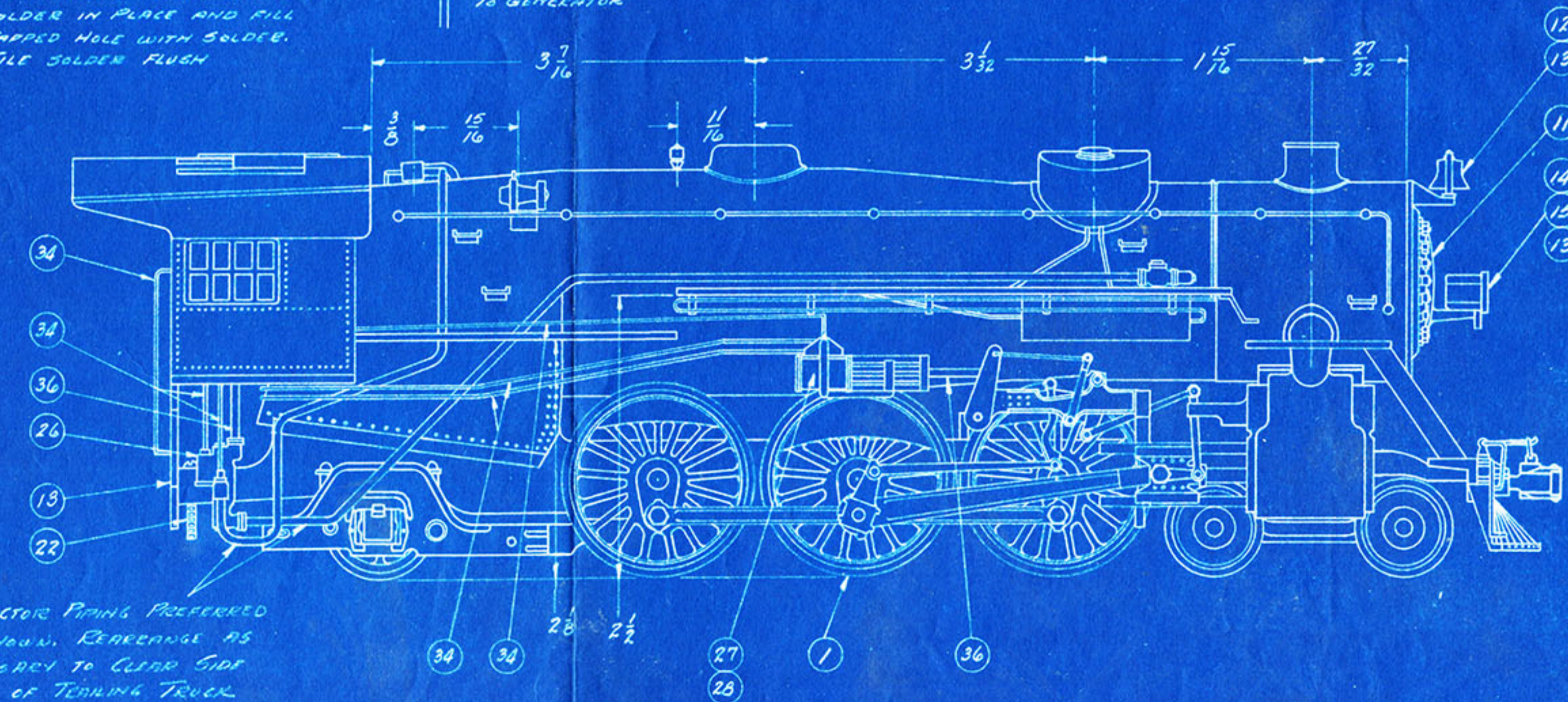


DOUBLE SIZE DETAIL ITEM 31

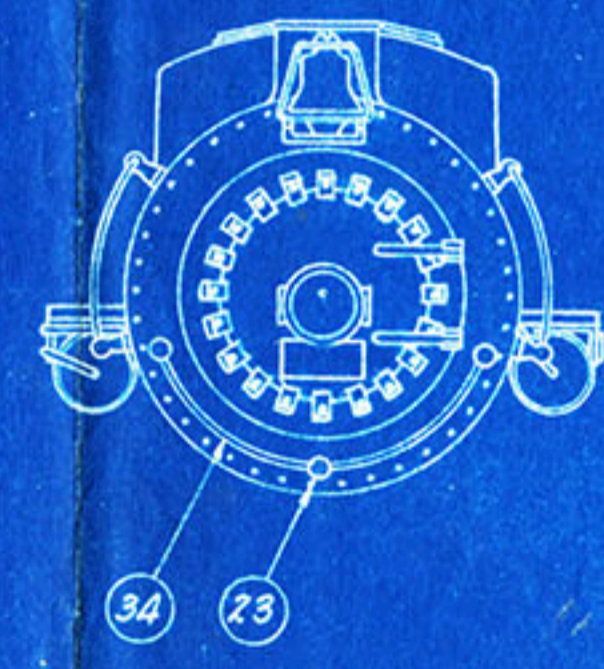
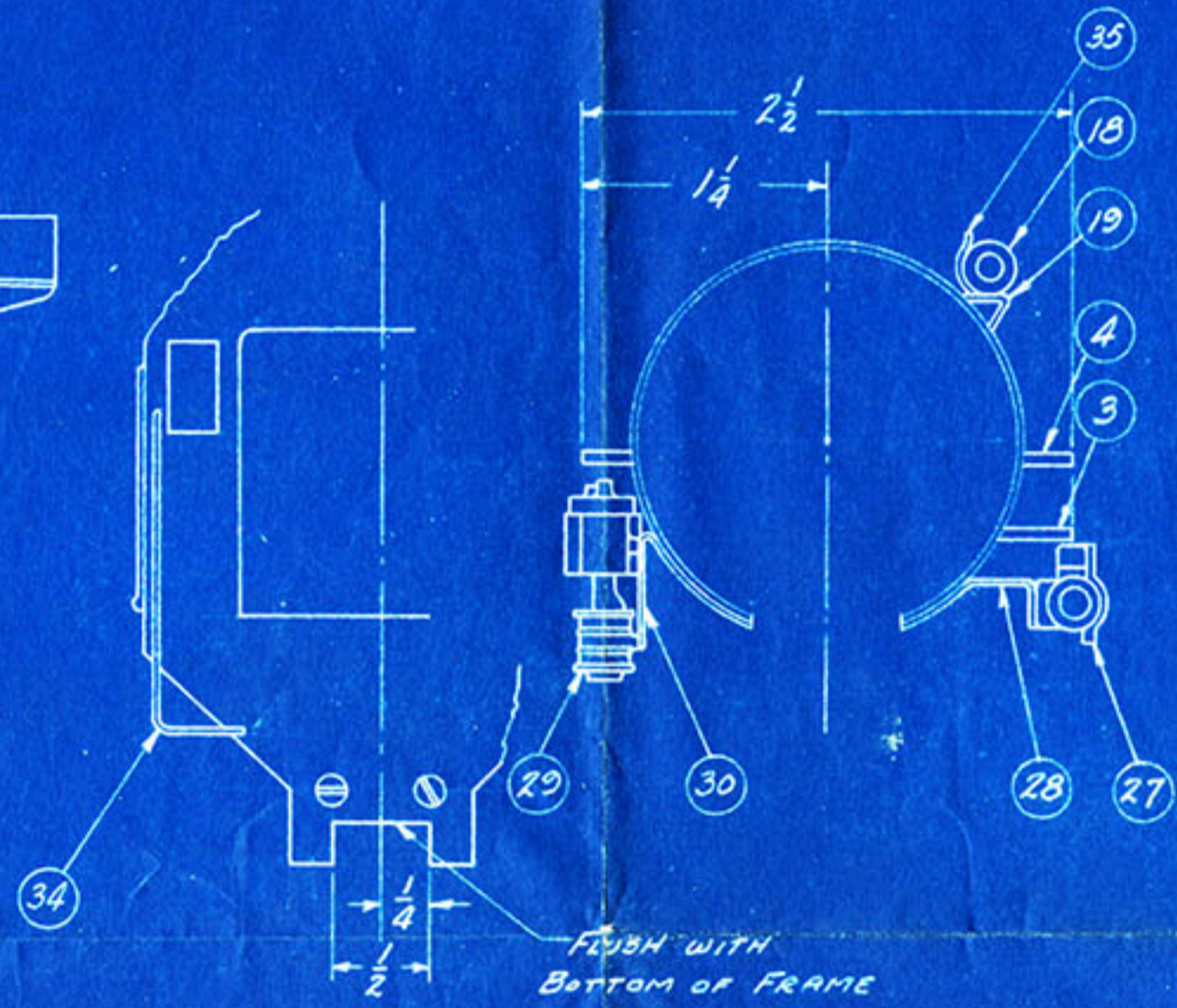


To STOKER  
 DRILL #50 (.070) 1/16 DEEP 2 PLACES  
 DRILL #36 (.046) 1/16 DEEP 3 PLACES  
 DRILL #50 (.070) THRU CENTER OF  
 BOSS ON TURRET. TAP #2-56  
 DRILL #14 (.086) THRU FIREBOX.  
 INSTALL TURRET WITH ITEM 24.  
 SOLDER IN PLACE AND FILL  
 TAPPED HOLE WITH SOLDER.  
 FILE SOLDER FLUSH

To GENERATOR  
 DRILL #50 (.070) 2 HOLES  
 FOR POP VALVES  
 (ITEM 17)



INJECTOR PIPING PREFERRED  
 AS SHOWN. REARRANGE AS  
 NECESSARY TO CLEAR SIDE  
 MOTION OF TENDING TRUCK



BILL OF MATERIAL				PACKER
ITEM	PART No.	NAME OF PART	No. REQ.	CHECK
1	302	CHASSIS ASSEMBLY	1	
2	301-2	BOILER-CAB ASSEMBLY	1	
3	301-3	RUNNING BOARD-REAR	2	
4	301-4	RUNNING BOARD-MAIN	2	
5	ST-160	RUNNING BOARD STEP	2	
6	ST-165	BOILER STEP	8	
7	CA-180	TURRET	1	
8	ST-55	STEAM DOME	1	
9	CA-60	SAND DOME	1	
10	CA-154	SMOKE STACK	1	
11	CA-15	BOILER FRONT	1	
12	TU-50	BELL ASSEMBLY	1	
13		MOUNTING SCREW #2-56 FHMS 3/16 LG	4	
14	TU-16	HEADLIGHT	1	
15	301-15	NUMBER BOARD .051 x 2 1/2	3	MAKE BEARS
16	301-16	SAND DOME SKIRT 1 1/8 x 2 5/8 IN STK	1	
17	TU-25	POP VALVE	2	
18	TU-15	TURBO-GENERATOR	1	
19	301-19	GENERATOR MTG BRKT .031 x 1/4 x 3/4	1	
20	CA-40	CHECK VALVE	2	
21	TU-2	AIR TANK	2	
22		MOUNTING SCREW #2-56 RHMS 3/16 LG	5	
23	TU-21	HANDRAIL POST	21	
24		MOUNTING SCREW #2-56 RHMS 3/16 LG	7	
25		MOUNTING SCREW #6-32 RHMS 1 1/2 LG	1	
26	CA-90	INJECTOR	2	
27	CA-180	POWER REVERSE	1	
28	301-28	POWER REVERSE MTG BRKT .031 x 1/4 x 1	1	
29	CA-136	PUMP	1	
30	301-30	PUMP MTG BRKT .031 x 1/4 x 1 1/2	1	
31	301-31	AIR FIRING MTG BRKT .031 x 1/4 x 6	2	
32	TU-1	AIR STRAINER	1	
33	TU-40	WHISTLE	1	
34		HANDRAILS & PIPING .031 MUSIC WIRE	34	
35		PIPING .039 BRASS WIRE	26	
36		PIPING 1/16 BRASS ROD	36	
37		#6-32 HEX NUT	1	

- NOTES
- ASSEMBLY INSTRUCTIONS N-301 ARE REQUIRED FOR BEST USE OF THIS DRAWING.
  - PIPING MOUNTING OR PASSAGE HOLES SHOULD BE DRILLED:
    - #64 (.036) FOR ITEM 34
    - #56 (.046) FOR ITEM 35
    - #50 (.070) FOR ITEM 36
  - AVOID USE OF FLAME TOO CLOSE TO ITEM 34 WIRE.
  - DRILL ALL CASTINGS FOR PIPING BEFORE MOUNTING.

HINES 0 GAUGE  
 U.S.R.A. 4-6-2 PACIFIC  
 BOILER & FINAL ASSEMBLY  
 THE HINES LINES CO.  
 DETROIT 23, MICHIGAN  
 DR. 12-248 R.A.L. SCALE  
 APP. ACTUAL & NOTED  
 BP-301